

# Quartz IR Heaters & Modules



## APPLICATION

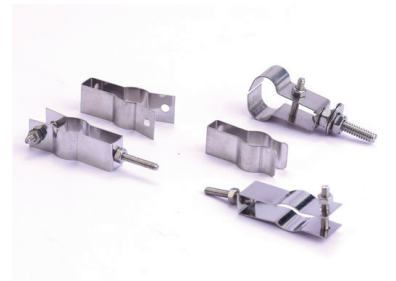
1. Ideal for drying adhesives, ink, paint & epoxy bonding/curing.
2. Laminating.
3. Shrink Packaging.
4. Thermoforming Plastics.
5. Other process requiring fast penetration of heat into metals, wood, synthetic fabrics & plastics.

## CONSTRUCTION

Quartz emitters provide medium wavelength radiation and can be the most preferred source of heat when rapid heater response is needed. The modules are comprised of a series of quartz tubes running parallel to each other within a highly reflective steel housing. Each tube contains a coiled resistance wire available in a variety of wattages and voltages. The large variety of sizes, shapes, and watt densities allows quartz emitters to be highly useful in zoning arrangements such as plastic thermoforming sheet-fed applications where complex heating patterns are needed, high-speed roll-fed processes, and machines requiring precise zone control because they are small in size, and can easily be put in larger panels.

## FEATURES

1. Standard Industry Sizes & Rating up to 40W /sq. Inch.
2. For fast heating & better reflection it is also available in Quartz Clear tubes / gold coated tubes etc.
3. Highly reflective rugged Steel housing construction.
4. Standard winding pattern gives uniform heating over entire face of heater.
5. Optional built-in type K or J T/C available.
6. Ideal for systems requiring small area zooming & close control of process.
7. Best when used at radiation distances of 4-10" from work.
8. Suitable for horizontal or vertical operation with tubes in horizontal plane.
9. Can be design in different Voltages.
10. More responsive heat-up & cool-down.



Mounting Clips



### CORPORATE

115, Jaywant Ind. Estate, Opp. Sobo Central Mall,  
63, Pt. M. M. Malaviya Road, Mumbai 400 034, India  
Tel: +91 22 2353 1025; Fax: +91 22 2351 7431  
Mob: +91 93 2224 4540

Email: [info@heatsource.in](mailto:info@heatsource.in)

### FACTORY

Bldg No. E-8, Parasnath Complex, Village Valgaon,  
Dapoda Road, Tal.Bhiwandi, Thane 421 302, India  
Tel: +91 2522 645665; Mob: +91 93222 32090  
Mob: +91 98207 12343

Web: [www.heatsource.in](http://www.heatsource.in)



## INSTALLATION & PRECAUTIONS

- White Cotton gloves should be worn when handling Quartz Elements. Never touch elements with bare hands.
- Oils & contaminants from the skin could be deposited upon the Quartz Sheath & would cause hot spots & possibly premature failures.
- As a safety necessity use approved conductors and connectors as per the National Wiring Laws so that the wires and connectors used for connections do not get heated up.
- For isolation and protection against short circuits of Heaters appropriate approved Double pole breakers to be used as per the total current of the group of heaters used.
- Any Metal part of the heaters shall always be earthed. To avoid short-circuits, the leads must not come into contact with sharp edges and/or objects.
- Always use appropriate controller for the better life of heater.
- The symbols for warnings and Cautions for the High Voltage and the High Temperature shall be placed near the part of end use.
- Any forced cooling, circulating requirement of the process shall also be taken care of, May be a wiring diagram with such requirements with heaters shall be placed near the target area.
- During changing / checking of heaters ensure that the incoming Mains Voltage are disconnected.



### CORPORATE

115, Jaywant Ind. Estate, Opp. Sobo Central Mall,  
63, Pt. M. M. Malaviya Road, Mumbai 400 034. India  
Tel: +91 22 2353 1025; Fax: +91 22 2351 7431  
Mob: +91 93 2224 4540

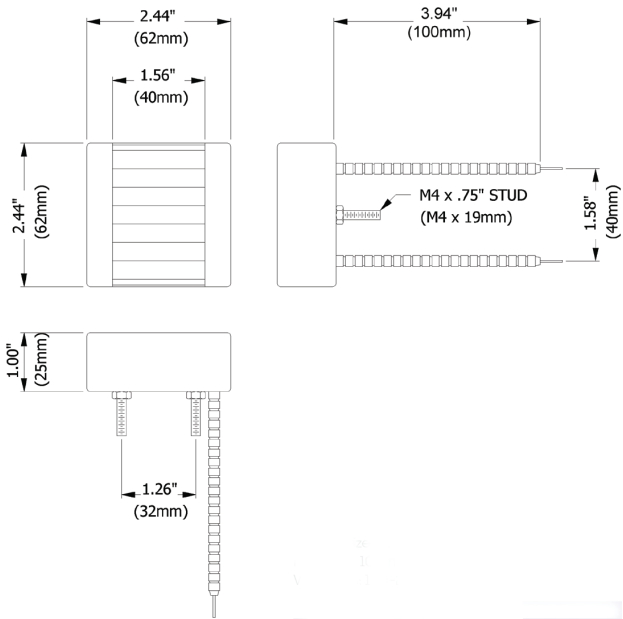
Email: [info@heatsource.in](mailto:info@heatsource.in)

### FACTORY

Bldg No. E-8, Parasnath Complex, Village Valgaon,  
Dapoda Road, Tal.Bhiwandi, Thane 421 302. India  
Tel: +91 2522 645665; Mob: +91 93222 32090  
Mob: +91 98207 12343

Web: [www.heatsource.in](http://www.heatsource.in)

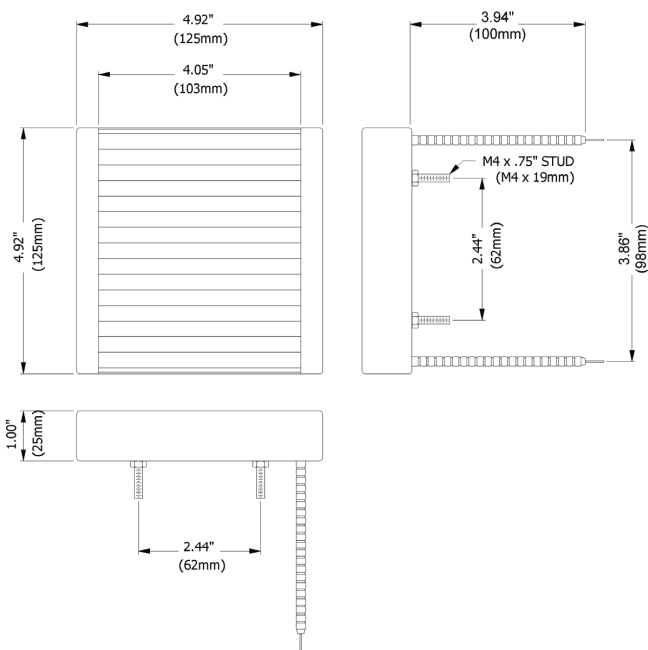
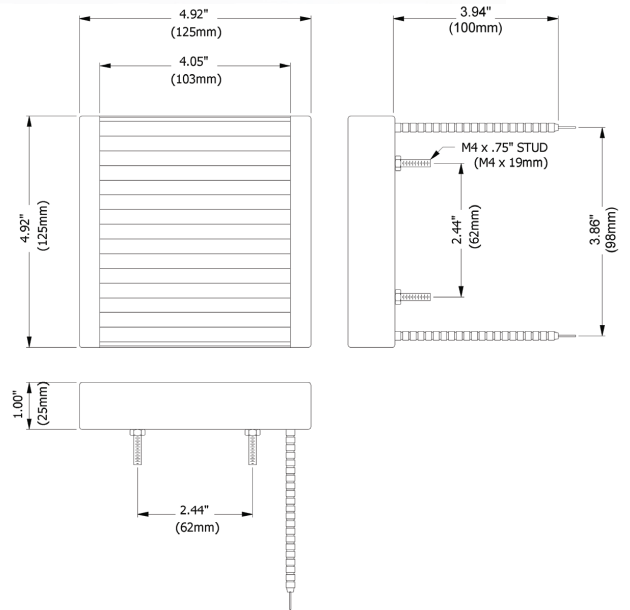
# STANDARD SIZES



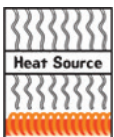
Overall Size: 62mm x 62mm  
Radiator: 62mm x 40mm  
Wattages: 75-150-200 W



Overall Size: 125mm x 62mm  
Radiator: 103mm x 62mm  
Wattages: 150-200-325-500 W



Overall Size: 125mm x 125mm  
Radiator: 125mm x 103mm  
Wattages: 300-400-500-750 W



## CORPORATE

115, Jaywant Ind. Estate, Opp. Sobo Central Mall,  
63, Pt. M. M. Malaviya Road, Mumbai 400 034. India  
Tel: +91 22 2353 1025; Fax: +91 22 2351 7431  
Mob: +91 93 2224 4540

Email: [info@heatsource.in](mailto:info@heatsource.in)

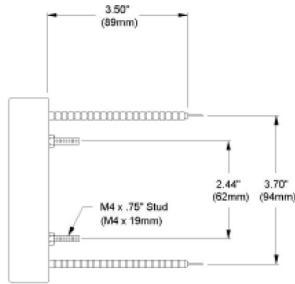
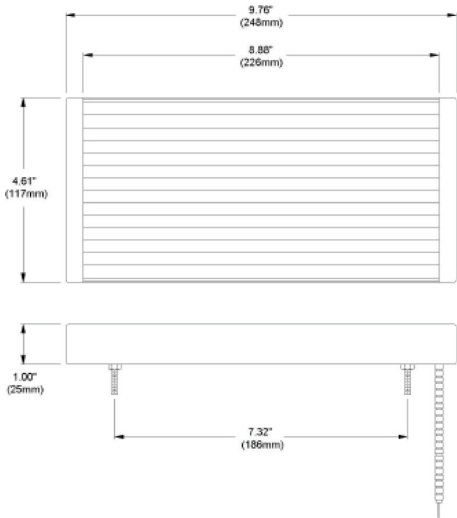
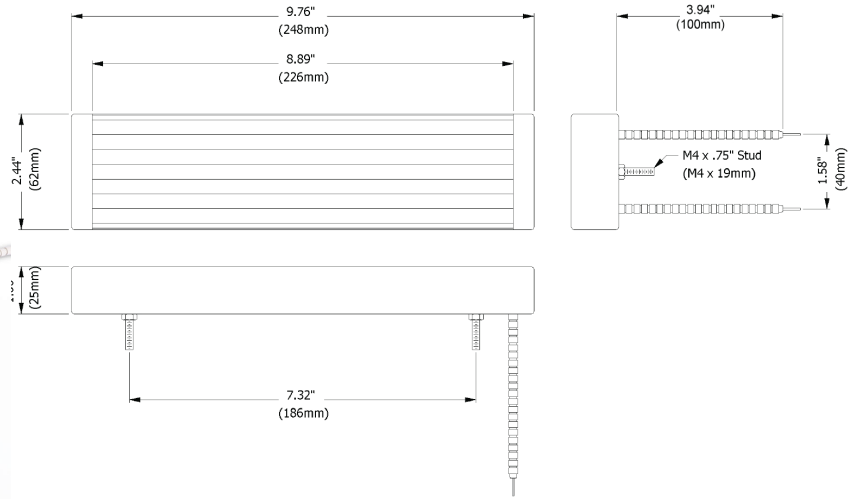
## FACTORY

Bldg No. E-8, Parasnath Complex, Village Valgaon,  
Dapoda Road, Tal.Bhiwandi, Thane 421 302. India  
Tel: +91 2522 645665; Mob: +91 93222 32090  
Mob: +91 98207 12343

Web: [www.heatsource.in](http://www.heatsource.in)



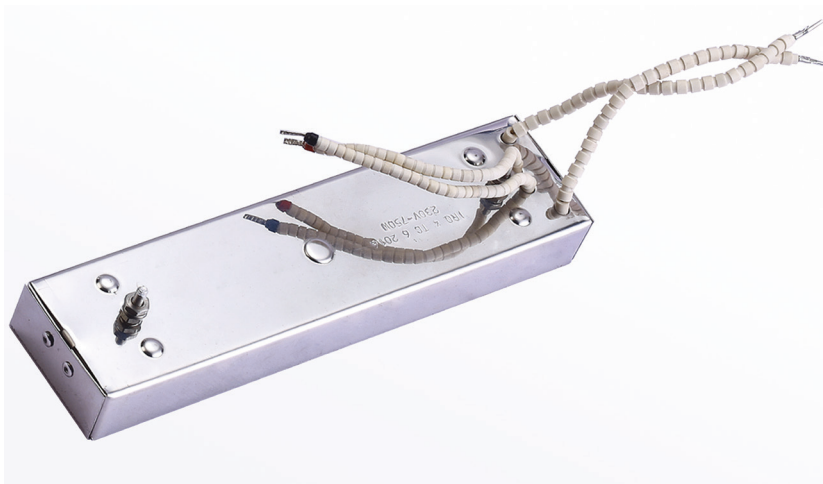
Overall Size: 248mm x 62mm  
 Radiator: 226mm x 62mm  
 Wattages: 300-400-500-750-1000 W



Overall Size: 248mm x 117mm  
 Radiator: 226mm x 117mm  
 Wattages: 750-1000-1250 W



**AVAILABLE with BUILT-IN THERMOCOUPLE**  
**in all sizes (Type J or K)**



**CORPORATE**  
 115, Jaywant Ind. Estate, Opp. Sobo Central Mall,  
 63, Pt. M. M. Malaviya Road, Mumbai 400 034, India  
 Tel: +91 22 2353 1025; Fax: +91 22 2351 7431  
 Mob: +91 93 2224 4540  
 Email: [info@heatsource.in](mailto:info@heatsource.in)

**FACTORY**  
 Bldg No. E-8, Parasnath Complex, Village Valgaon,  
 Dapoda Road, Tal.Bhiwandi, Thane 421 302, India  
 Tel: +91 2522 645665; Mob: +91 93222 32090  
 Mob: +91 98207 12343  
 Web: [www.heatsource.in](http://www.heatsource.in)