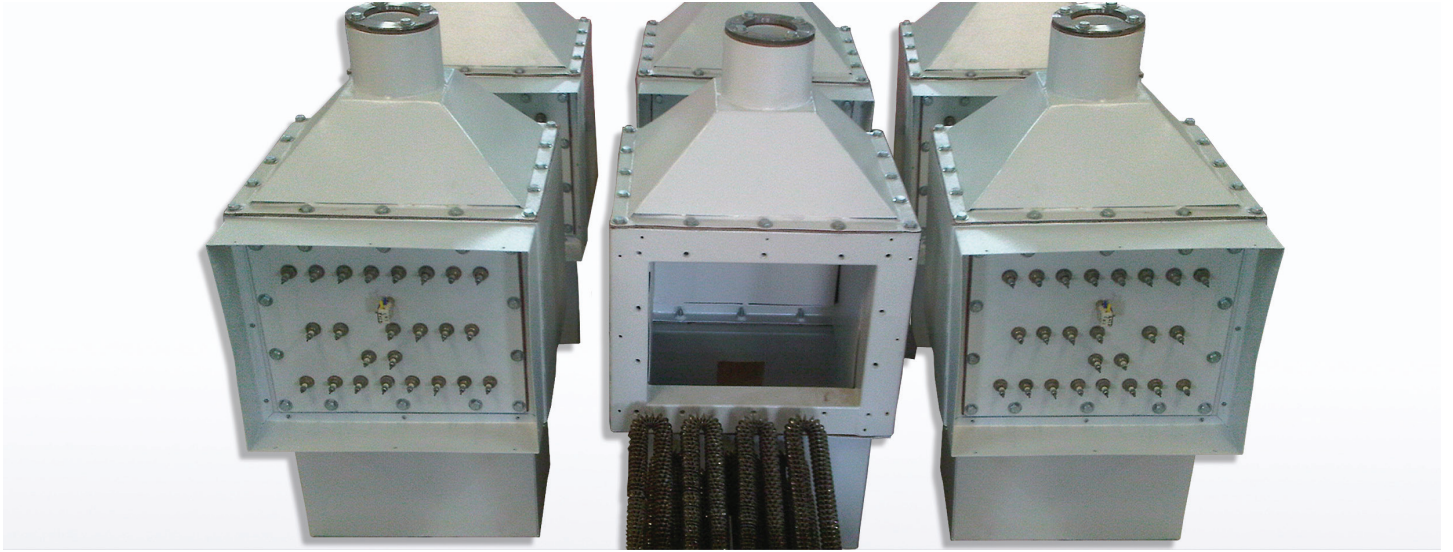


Duct Heaters



APPLICATION

This type of heater is used where forced hot air is required through smaller ducts of ovens, dryers, hot air blast, space heating etc.

- 1) Primary Room Heating (Central or Zone)
- 2) Supplemental Room Heating (Heat Pumps)
- 3) Air Tempering (Outside Air)
- 4) Preheating (Make-Up Air)
- 5) Reheating (Overcooling applications)
- 6) Industrial and Commercial Buildings

CONSTRUCTION

Pairs of tubular (with - w/o fins) heaters are mounted in a chamber with easy to replace facility. Complete with terminal cover on the top or side isolated from the heating zone.

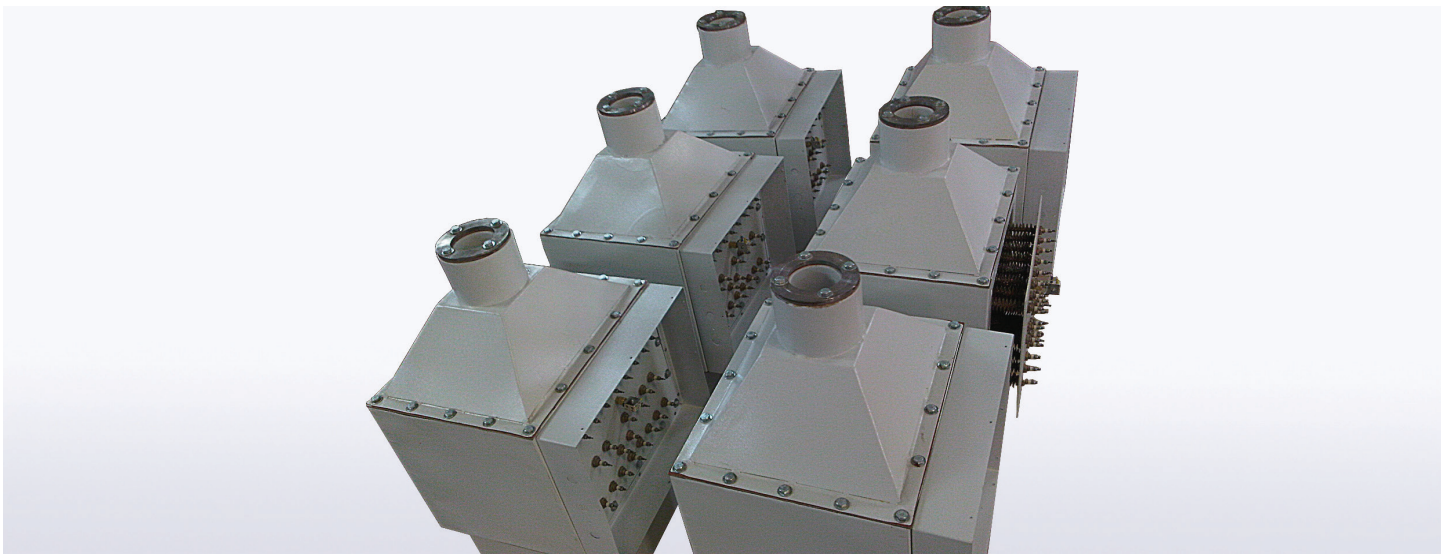
STANDARD SIZES & CAPACITIES

Length: 18", 24"

Volts: 240, 440

Finn Dia.: 4" to 24"

Watts: 6 to 60 KW



CORPORATE

115, Jaywant Ind. Estate, Opp. Sobo Central Mall,
63, Pt. M. M. Malaviya Road, Mumbai 400 034, India
Tel: +91 22 2353 1025; Fax: +91 22 2351 7431
Mob: +91 93 2224 4540

Email: info@heatsource.in

FACTORY

Bldg No. E-8, Parasnath Complex, Village Valgaon,
Dapoda Road, Tal.Bhiwandi, Thane 421 302, India
Tel: +91 2522 645665; Mob: +91 93222 32090
Mob: +91 98207 12343

Web: www.heatsource.in